



The advertisement features a dark grey background with large, abstract geometric shapes in teal and black. On the right side, there is a faded image of a modern apartment building. The text is positioned in the upper right quadrant.

श्रीनंद CITY

2 & 3 BHK APARTMENTS & SHOPS

beautiful living space...



The **ENVIRONMENT** Which
Gives You The Best Positive
Atmosphere And The Exposure to
NATURE That Gives You
PEACE...



SHOPS & SHOWROOMS



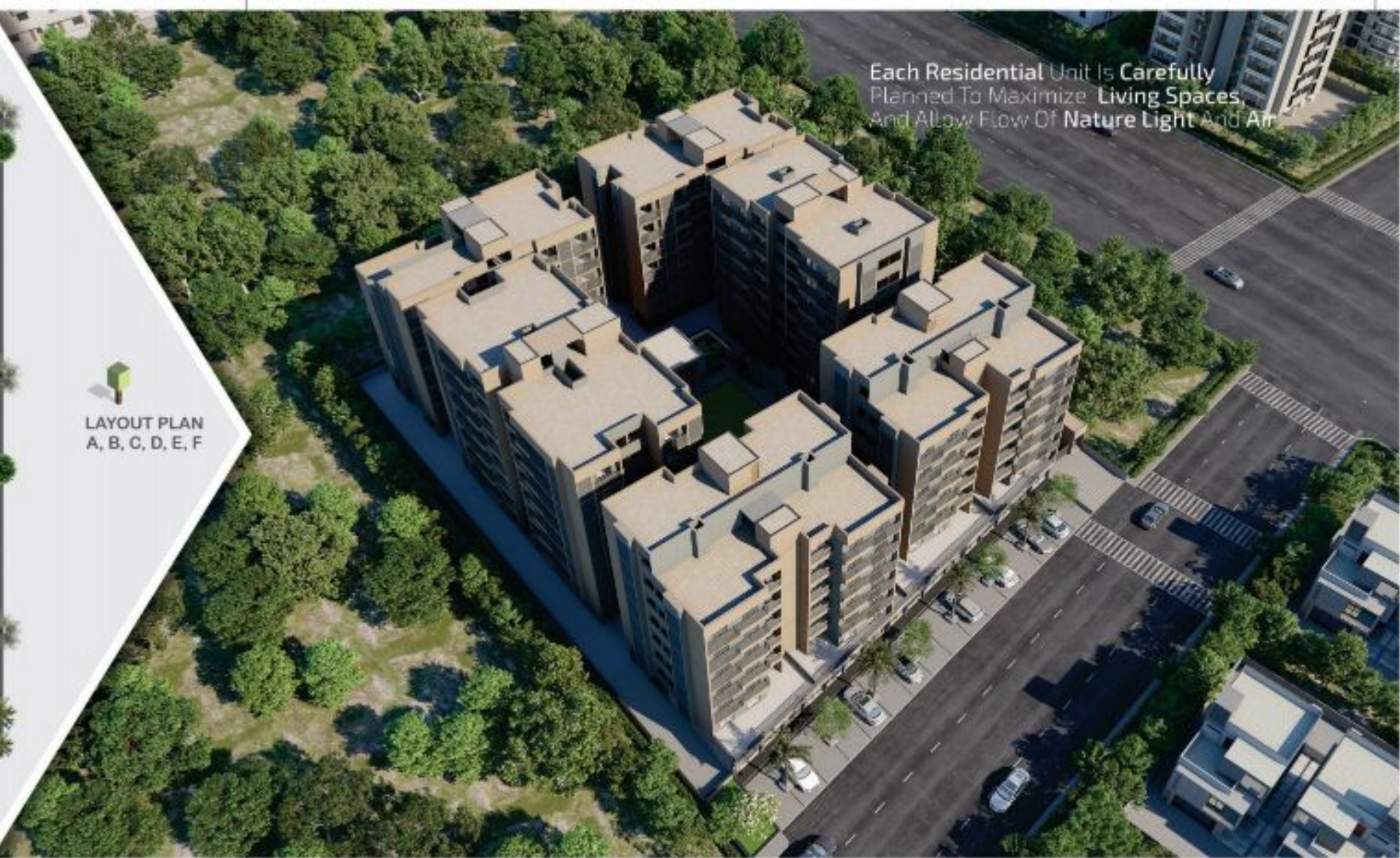
PARKING PLAN



Each Residential Unit Is Carefully Planned To Maximize Living Spaces, And Allow Flow Of Nature Light And Air



LAYOUT PLAN
A, B, C, D, E, F





SECTION PLAN - A



BLOCK - A





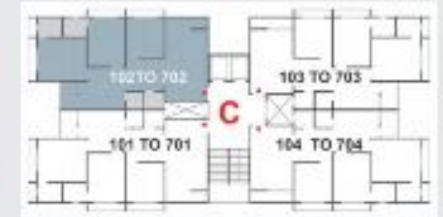
BLOCK - B



 SECTION PLAN - C



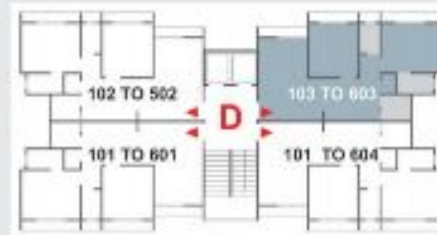
 BLOCK - C
TYPE - A



 BLOCK - C
TYPE - B



SECTION PLAN - D



BLOCK - D, E





BLOCK - F
TYPE - A



BLOCK - F
TYPE - B



AMENITIES



POWER
BACK UP



CCTV
SURVEILLANCE



24 HOURS
WATER SUPPLY



WALKING
TRAIL



WOMEN
GOSSIP AREA



SENIOR CITIZEN
SIT OUT



SECURITY
CABIN



CHILDREN'S
PLAY AREA



PARKING



LANDSCAP
GARDEN



FIRE SAFTY



LIFT

UNIT SPECIFICATIONS

- BRICK WORK AND PLASTER**
 - Brick masonry.
 - Inside- single coat mala plaster.
 - External - double coat plaster as per architect detail.
- Kitchen**
 - Stone platform with SS Sink
 - Glazed With Tiles Above platform up to Lintel Level
- Road**
 - Internal RCC Road
- FLOORING**
 - Vitrified flooring.
 - Stone sill in windows.
- ELECTRICAL**
 - Single phase electrical supply.
 - Concealed copper wiring with latest electrical safety features & standard quality switches.
- TOILET / PLUMBING**
 - Glazed tiles dado in all toilets with exclusive design up to lintel level
 - Concealed plumbing with good quality fitting.
- WINDOWS**
 - Aluminium section window.
- DOOR**
 - Decorative main entrance door.
 - Flush door for internal rooms
- ELEVATORS**
 - Lift of standard quality with elegant interior with sufficient capacity.
- PAINTS**
 - Putty on all walls.
 - Oil paints on all grills / railing
 - Waterproofing.
 - Acrylic paint on exterior walls.

PROJECT ADDITIONAL FEATURES

- UNINTERRUPTED WATER SUPPLY BY**
 - Tube- well of adequate capacity.
 - Underground water tank with adequate storage capacity.
 - Efficient fire safety system.

BUILDING SPECIFICATION

- Earthquake resistant safe & sound RCC frame structure.
- Standard tested raw material for all work.
- Stone / Vitrified flooring in staircase.
- Vitrified / stone flooring in foyers
- China mosaic with water proofing treatment on terrace
- Elevators of branded company with sufficient capacity.
- Spacious lift foyec.

RULES & REGULATIONS

- Stamp duty, Registration charges, Legal documentation charges, Notarisation deposit, DGCC charges and any other charges shall be borne by members separately.
- Changes in external elevation shall not be permitted.
- All rights reserved by the developer for alteration/modification/improvement/re-configuration and change in dimensions and planning shall be binding to all.
- Business practices leading to pollution or causing material damage to the building or premises are allowed in the premises.
- Regular payments may lead to cancellation of bookings & late payment will be charged.

TERMS & CONDITIONS

- All the dimensions / measurements given are unfinished and approximate.
- The photograph & artistic impression are for reference only. Actual building may vary from the representation mentioned in the brochure.
- Note : This brochure is for information. It does not form a part of the agreement or any legal document Project.



KEY PLAN & QR CODE



DEVELOPER

SK
S.K. REALITY

Site : Shreenand City K-7, Beside Ridhhi Maruti,
Opp. Green City, Sector :26, Gandhinagar - 382027

CONTACT : 98242 96075, 94260 22444

RERA NO :

PR/GJ/GANDHINAGAR/GANDHINAGAR/Other/MAA07052/280520

ARCHITECT
UMANG PATEL
ASSOCIATES
876 4328 4303

STRUCTURE ENGINEER
UMANG PATEL
PLANNING
876 4328 4303

3D Design
SIDDHANT PATEL
MEP Consultant
Ananya Construction Pvt